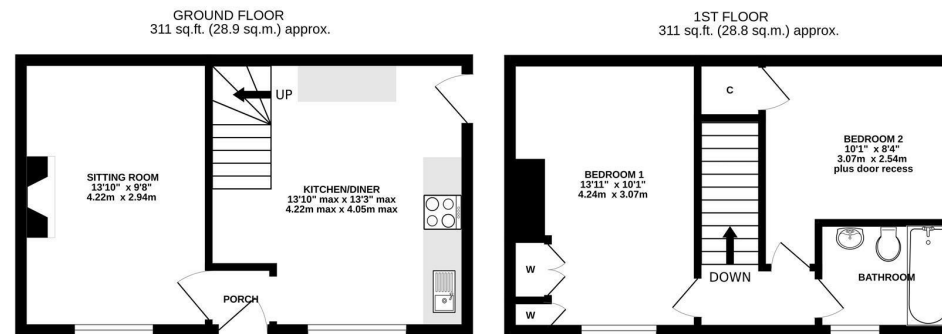
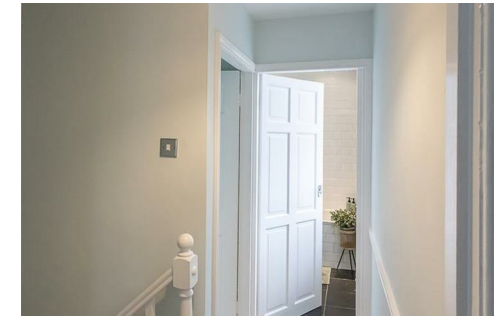


Well Presented with No Onward Chain!
This delightful two bedroom end-terrace is ideally located on Woolsingham Road, Gosforth. Positioned just off Salters Road, Woolsingham Road is perfectly placed close local transport links and just a short walk to Gosforth High Street with its shops, cafe's and restaurants.

The accommodation briefly comprises: entrance through to kitchen diner with a range of fitted units, hardwood work surfaces, spot lighting, side door access to the yard and stairs to first floor; lounge with feature fireplace. The first floor landing gives access to two double bedrooms, both with fitted storage cupboards; bathroom complete with three piece suite. Externally, an enclosed yard with wall boundaries, storage building and roller shutter door access providing off street parking if required. Offered to the market with no onward chain, early viewings are advised!

Two Bedroom End-Terrace | 634 Sq ft (634.5 Sq ft (58.9m²) | Lounge | Kitchen Diner | Bathroom | Enclosed Yard | GCH | Freehold | Popular Location | No Onward Chain | Council Tax Band B | EPC: E



TOTAL FLOOR AREA : 622 sq.ft. (57.8 sq.m.) approx.

Whilst every attempt has been made to ensure the accuracy of the floorplan contained here, measurements of doors, windows, rooms and any other items are approximate and no responsibility is taken for any error, omission or mis-statement. This plan is for illustrative purposes only and should be used as such by any prospective purchaser. The services, systems and appliances shown have not been tested and no guarantee as to their operability or efficiency can be given.

Made with Metropix ©2023



Offers Over £210,000

IMPORTANT NOTE: These particulars and the descriptions and measurements herein do not constitute representation and whilst every effort has been made to ensure accuracy, this cannot be guaranteed.

